

**Portage la Prairie
Water Treatment 2009**

blank red cells indicate unavailable data

	Influent	Effluent	Influent	Effluent	Influent	Effluent	WTP Effluent	McKay Res.	W.T.P.	McKay Res.
	Hardness	Hardness	Turbidity	Turbidity	pH	pH	Free Cl2	Effluent Free Cl2	Effluent Fluoride	Effl. F.
MONTH	ppm	ppm	NTU	NTU			(sampled)mg/l	mg/l (McKay)	(Sampled) mg/l	mg/l
01-Jan-09	432	202	31.20	0.13	7.75	7.58	1.75	1.00	0.94	0.70
02-Jan-09	428	204	17.60	0.09	7.65	7.60	1.91	0.96	0.74	0.71
03-Jan-09	436	192	19.60	0.07	7.73	7.68	1.03	1.17	0.90	0.80
04-Jan-09	432	212	39.40	0.11	7.74	7.86	1.07	0.69	0.88	0.82
05-Jan-09	434	212	15.40	0.10	7.78	7.50	1.32	0.51	0.87	0.86
06-Jan-09	426	220	13.70	0.10	7.75	7.43	1.38	0.77	1.01	1.09
07-Jan-09	420	232	13.00	0.13	7.92	7.60	0.79	0.47	0.84	0.86
08-Jan-09	414	216	11.60	0.12	7.73	7.43	1.20	0.40	1.14	1.17
09-Jan-09	436	218	12.10	0.11	7.76	7.32	1.05	0.52	1.12	0.97
10-Jan-09	404	200	11.20	0.11	7.75	7.61	1.20	0.80	1.14	1.02
11-Jan-09	410	202	7.40	0.10	7.77	7.32	1.40	0.90	1.10	1.02
12-Jan-09	428	218	12.70	0.10	7.66	7.43	1.17	0.32	1.01	0.99
13-Jan-09	416	218	8.35	0.09	7.66	7.46	1.11	0.77	0.85	1.10
14-Jan-09	416	214	11.60	0.09	7.81	7.63	1.00	0.60	0.70	0.72
15-Jan-09	424	218	10.50	0.09	7.66	7.32	1.48	0.74	0.84	0.88
16-Jan-09	426	210	11.60	0.09	7.65	7.33	1.75	0.92	0.90	0.91
17-Jan-09	420	204	14.70	0.09	7.82	7.63	1.28	1.29	0.86	0.90
18-Jan-09	420	214	20.20	0.09	7.72	7.69	1.17	1.10	1.03	0.85
19-Jan-09	416	210	12.80	0.09	7.77	7.72	1.20	0.85	0.91	0.83
20-Jan-09	418	208	8.46	0.08	7.81	7.64	1.45	0.80	0.98	0.91
21-Jan-09	412	204	7.50	0.09	7.80	7.79	1.35	0.85	0.82	0.78
22-Jan-09	416	204	9.08	0.09	7.72	7.66	1.40	0.80	0.81	0.78
23-Jan-09	412	204	9.11	0.09	7.71	7.75	1.55	1.00	0.80	0.79
24-Jan-09	424	202	18.40	0.11	7.64	7.84	1.57	1.34	0.74	0.73
25-Jan-09	426	200	16.10	0.10	7.79	8.10	1.75	1.16	0.74	0.72
26-Jan-09	424	210	12.60	0.11	7.69	7.66	1.43	0.93	0.95	0.94
27-Jan-09	414	208	15.80	0.11	7.75	7.54	1.30	0.80	0.84	0.92
28-Jan-09	428	216	17.20	0.11	7.75	7.59	1.65	0.95	0.97	0.94
29-Jan-09	412	210	15.10	0.11	7.73	7.57	1.76	1.21	0.94	0.91
30-Jan-09	414	208	15.40	0.10	7.72	7.80	1.84	1.33	0.90	0.91
31-Jan-09	440	216	25.80	0.21	7.56	7.62	1.85	1.22	0.80	0.83

WTP Res Infl	Process
Flow	water
m ³	m ³
7480	300
17210	365
18280	520
18100	573
18450	570
19490	568
19930	563
20570	577
20610	581
20020	536
19820	565
18760	550
19040	581
18760	564
20690	586
19470	581
19750	585
19000	566
19270	571
18750	575
20700	592
19990	597
21810	587
20230	583
18340	593
20100	595
20340	600
21710	559
20250	549
19640	549
21390	567

01-Feb-09	418	200	56.20	0.18	7.57	7.61	2.25	1.36	0.82	0.80
02-Feb-09	392	186	27.60	0.12	7.74	7.65	1.90	1.45	0.76	0.73
03-Feb-09	396	198	19.30	0.11	7.72	7.70	2.35	1.75	0.81	0.83
04-Feb-09	394	206	17.80	0.12	7.86	7.62	2.65	2.10	0.80	0.86
05-Feb-09	396	202	18.20	0.11	7.91	7.65	2.35	1.90	0.71	0.79
06-Feb-09	396	204	21.87	0.11	7.67	7.66	2.40	1.90	0.82	0.83
07-Feb-09	416	218	17.90	0.14	7.72	7.72	2.60	2.13	0.52	0.53
08-Feb-09	422	202	13.40	0.11	7.87	7.92	2.30	1.99	0.74	0.83
09-Feb-09	434	214	18.40	0.13	7.78	7.81	2.16	1.61	0.74	0.78
10-Feb-09	408	216	21.80	0.14	7.75	8.03	1.38	1.09	0.64	0.65
11-Feb-09	428	208	22.50	0.13	7.76	7.49	1.77	0.84	1.01	0.68
12-Feb-09	434	216	28.40	0.13	7.79	7.49	1.58	0.87	0.93	0.79
13-Feb-09	416	218	27.40	0.12	7.79	7.54	1.54	1.14	0.98	1.12
14-Feb-09	410	202	24.20	0.11	7.85	7.68	1.60	1.10	1.12	1.08
15-Feb-09	410	206	12.40	0.12	7.63	7.61	1.70	1.25	1.21	1.08
16-Feb-09	314	208	22.20	0.10	7.82	7.61	1.60	1.20	0.92	0.90
17-Feb-09	412	200	18.50	0.10	7.87	7.94	1.57	1.34	1.35	0.96
18-Feb-09	410	202	21.80	0.24	7.63	8.01	1.66	1.18	0.82	1.46
19-Feb-09	412	200	28.60	0.13	8.01	8.00	2.04	1.00	0.84	0.82
20-Feb-09	396	198	33.80	0.13	7.75	7.67	1.57	1.17	0.88	0.77
21-Feb-09	410	216	96.70	0.17	7.63	7.70	1.98	1.10	0.82	0.95
22-Feb-09	402	202	88.10	0.23	7.76	7.99	2.07	1.12	0.81	0.84
23-Feb-09	390	208	33.60	0.15	7.73	7.82	1.30	1.05	0.72	0.74
24-Feb-09	288	200	46.90	0.14	7.88	8.11	1.55	1.05	0.84	0.82
25-Feb-09	392	204	37.20	0.12	7.80	7.88	1.50	0.95	0.83	0.82
26-Feb-09	392	194	37.00	0.12	7.75	7.93	1.45	1.05	0.72	0.77
27-Feb-09	388	208	36.30	0.13	7.88	7.69	1.65	1.10	0.84	0.82
28-Feb-09	394	212	155.00	0.32	7.68	7.90	1.62	1.04	0.84	0.94
1-Mar-09	400	192	171.00	0.27	7.72	7.94	1.83	1.10	0.76	0.82
2-Mar-09	396	214	96.30	0.19	7.83	7.84	1.83	1.17	0.94	0.88
3-Mar-09	418	212	69.00	0.19	7.68	7.93	1.88	1.16	0.95	0.83
4-Mar-09	416	202	54.20	0.21	7.84	7.93	1.69	1.39	0.99	0.92
5-Mar-09	410	204	54.30	0.19	7.87	8.18	1.78	1.30	0.88	0.86
6-Mar-09	408	212	70.80	0.17	7.81	8.02	1.45	1.21	0.90	0.86
7-Mar-09	398	210	72.20	0.16	7.84	7.94	1.45	1.05	0.84	0.88
8-Mar-09	392	210	68.80	0.15	7.75	7.99	1.45	1.10	0.81	0.86
9-Mar-09	404	212	98.80	0.18	7.72	7.86	1.54	0.88	0.81	0.87

23090	576
19680	562
17750	543
19700	544
19140	541
19790	540
21660	570
20430	537
19210	423
17950	538
17980	531
19200	536
19350	544
18050	518
16820	508
16840	529
16580	516
16670	533
15650	535
16700	541
16220	527
16070	533
17750	527
18200	545
18790	554
18150	551
17370	536
16490	423
20000	665
19150	549
19290	555
19050	554
17850	519
19410	540
18050	489
18920	508
19140	561

10-Mar-09	408	216	59.40	0.17	7.74	7.65	1.61	0.97	1.10	0.86
11-Mar-09	414	214	64.20	0.27	7.72	7.73	1.41	0.88	0.80	1.25
12-Mar-09	410	212	62.50	0.16	7.67	7.46	1.60	0.82	0.98	0.93
13-Mar-09	424	214	69.40	0.14	7.70	7.22	1.64	0.83	0.93	0.87
14-Mar-09	410	212	61.10	0.16	7.74	7.95	1.74	1.17	0.98	0.87
15-Mar-09	420	218	62.50	0.17	7.80	8.26	1.29	1.29	0.64	0.56
16-Mar-09	416	224	78.70	0.18	7.74	7.44	1.52	0.96	0.44	0.43
17-Mar-09	416	226	73.30	0.18	7.77	7.56	1.39	0.78	0.75	0.71
18-Mar-09	402	210	68.10	0.17	7.82	7.65	1.25	0.90	0.61	0.52
19-Mar-09	404	210	60.30	0.07	7.71	7.98	1.85	1.09	0.54	0.72
20-Mar-09	410	214	71.50	0.17	7.84	7.73	1.60	1.02	0.85	0.87
21-Mar-09	400	212	50.20	0.16	7.82	7.92	1.35	1.00	0.96	0.98
22-Mar-09	404	214	49.60	0.18	7.84	7.81	1.40	1.00	0.82	0.89
23-Mar-09	400	210	39.70	0.18	7.80	7.69	1.37	0.93	0.80	0.92
24-Mar-09	352	198	47.40	0.19	7.77	7.69	1.38	0.94	0.84	0.92
25-Mar-09	260	200	152.00	0.37	7.75	7.60	0.95	0.72	0.92	0.00
26-Mar-09	238	200	59.00	3.39	7.72	7.75	1.69	0.12	0.90	0.88
27-Mar-09	354	276	173.00	1.00	7.81	7.77	2.07	0.45	0.73	0.86
28-Mar-09	194	124	398.00	0.98	7.92	7.21	1.18	1.00	0.82	0.89
29-Mar-09	134	156	196.00	9.12	7.93	7.76	0.20	0.33	0.86	0.84
30-Mar-09	148	126	233.00	1.99	7.80	7.02	0.25	0.07	1.35	1.24
31-Mar-09	154	164	131.00	0.51	7.75	7.21	0.04	0.65	1.06	1.18
01-Apr-09	184	138	80.00	0.43	7.71	7.06	0.66	0.20	0.74	0.79
02-Apr-09	212	148	65.50	0.44	7.67	6.83	1.39	0.41	0.79	0.65
03-Apr-09	216	150	60.10	0.45	7.66	7.18	1.99	0.75	0.80	0.88
04-Apr-09	210	140	68.20	0.26	7.72	7.61	0.46	1.05	0.75	0.74
05-Apr-09	204	146	61.90	0.34	7.67	7.34	2.20	1.25	0.84	0.81
06-Apr-09	212	158	110.00	0.60	7.77	7.11	2.20	1.44	0.90	0.85
07-Apr-09	224	166	61.20	0.81	7.75	7.07	1.48	1.22	0.81	0.86
08-Apr-09	212	172	77.50	0.87	7.74	7.63	0.76	0.26	0.88	0.97
09-Apr-09	204	164	79.50	0.37	7.70	7.43	1.11	0.32	0.83	0.91
10-Apr-09	190	140	84.90	0.59	7.79	7.42	1.53	0.43	0.75	0.78
11-Apr-09	166	150	136.00	1.77	7.78	7.63	0.99	0.68	0.69	0.63
12-Apr-09	166	146	405.00	1.76	7.74	7.28	2.60	1.07	0.71	0.69
13-Apr-09	142	100	447.00	1.44	7.84	7.16	1.89	1.25	0.65	0.69
14-Apr-09	142	94	911.00	2.30	7.76	7.11	2.50	0.95	0.90	0.80
15-Apr-09	146	110	1518.00	2.89	7.74	7.12	2.40	1.40	0.96	0.94

18790	536
18480	528
18120	515
19780	551
20160	561
16420	521
19010	536
18018	545
18680	540
18170	537
16220	523
13490	501
11950	476
12690	496
13470	531
13050	420
13830	419
15930	439
16650	437
15440	525
21150	526
21290	540
19380	538
18810	559
19220	565
18550	560
18860	523
19330	568
18280	588
17750	564
17420	555
10800	554
8440	535
10240	514
17290	549
21610	590
18630	553

16-Apr-09	140	118	674.00	4.39	7.94	7.24	3.00	1.80	0.95	0.96
17-Apr-09	144	122	529.00	1.02	7.88	7.36	2.90	2.30	0.80	0.82
18-Apr-09	158	136	880.00	1.20	7.66	7.41	2.45	1.43	0.83	0.87
19-Apr-09	160	130	771.00	1.02	7.63	7.33	3.05	0.83	0.75	0.81
20-Apr-09	158	126	292.00	0.83	7.92	7.18	3.50	1.50	0.72	0.56
21-Apr-09	168	142	205.00	1.17	7.84	7.28	2.17	1.68	0.99	0.81
22-Apr-09	172	136	187.00	1.06	7.74	7.57	2.07	1.11	0.94	0.91
23-Apr-09	182	140	197.00	0.84	7.79	7.68	1.95	0.75	0.93	0.90
24-Apr-09	188	148	194.00	0.65	7.75	7.10	2.40	0.64	0.82	0.80
25-Apr-09	190	128	790.00	0.76	7.75	7.70	2.45	1.14	0.88	0.85
26-Apr-09	196	132	394.00	0.65	7.86	7.96	2.48	1.09	0.88	0.87
27-Apr-09	196	146	116.00	0.58	7.78	7.49	2.65	1.11	1.01	1.15
28-Apr-09	200	156	108.00	0.77	7.88	7.68	2.65	1.26	0.97	1.03
29-Apr-09	196	142	102.00	0.75	7.77	7.26	2.18	1.11	0.86	0.99
30-Apr-09	198	106	93.70	0.47	7.85	7.14	1.76	0.96	1.02	1.11
01-May-09	196	140	86.90	0.30	7.81	7.34	3.00	1.33	0.86	0.86
02-May-09	192	118	124.00	0.25	7.83	7.22	3.00	1.85	0.84	0.83
03-May-09	190	106	99.60	0.23	7.95	7.35	3.00	2.10	0.93	0.91
04-May-09	192	128	139.00	0.24	8.02	7.30	2.20	1.70	0.86	0.90
05-May-09	200	138	80.70	0.29	7.97	7.20	2.70	1.55	0.83	0.85
06-May-09	206	140	84.80	0.33	8.40	6.96	2.80	1.33	0.80	0.87
07-May-09	214	130	173.00	0.61	8.07	7.13	2.14	1.32	0.81	0.72
08-May-09	234	118	95.20	0.22	8.03	7.40	1.91	0.95	0.75	0.78
09-May-09	204	128	110.00	0.23	7.85	7.06	1.95	0.98	0.75	0.83
10-May-09	208	122	62.50	0.20	7.78	7.23	2.12	1.03	0.68	0.76
11-May-09	224	126	59.30	0.24	8.03	7.53	2.40	1.15	0.80	0.71
12-May-09	220	134	48.60	0.21	8.20	7.57	1.54	0.89	0.47	0.67
13-May-09	214	124	58.60	0.27	8.11	7.44	1.67	0.84	0.97	0.90
14-May-09	230	134	122.00	0.35	8.17	7.43	2.15	0.91	0.71	0.45
15-May-09	226	136	91.20	0.26	7.91	7.54	1.60	1.09	0.79	0.87
16-May-09	234	122	117.00	0.28	7.92	7.46	1.95	1.10	0.86	0.88
17-May-09	234	136	79.60	0.25	7.85	7.77	1.95	1.00	0.82	0.80
18-May-09	230	124	85.30	0.24	7.97	7.57	1.80	1.10	0.78	0.76
19-May-09	240	170	42.10	0.17	7.92	7.46	2.20	1.04	0.26	0.19
20-May-09	240	144	55.50	0.29	7.97	7.06	2.02	1.24	0.38	0.20
21-May-09	232	136	45.00	0.22	7.97	7.07	2.16	1.29	0.45	0.90
22-May-09	238	142	42.70	0.22	7.89	7.01	1.57	0.97	1.45	0.78

22840	542
22220	555
19740	536
17180	524
16990	549
16990	522
21130	563
18890	530
18180	536
19410	538
20780	577
17650	519
19120	526
17660	527
16110	544
19430	551
20760	531
20900	535
21790	560
17340	536
18890	496
19550	523
17550	525
19000	551
17840	550
19000	525
19070	526
19610	525
18000	516
11700	459
12380	442
12390	451
12780	447
18150	479
18320	516
18410	555
16680	543

23-May-09	260	142	38.50	0.26	8.07	7.17	1.86	0.82	0.98	0.92
24-May-09	270	144	34.70	0.21	8.07	7.00	1.76	0.68	0.91	0.89
25-May-09	272	146	55.40	0.20	7.99	6.74	1.90	1.35	0.89	1.08
26-May-09	276	118	66.40	0.24	7.97	6.95	1.79	1.00	1.00	0.96
27-May-09	256	138	40.40	0.17	8.03	6.98	1.77	0.86	1.11	0.84
28-May-09	260	130	53.70	0.16	7.83	7.14	1.66	0.97	1.07	1.14
29-May-09	300	138	43.40	0.13	7.99	7.00	1.89	0.71	0.98	1.11
30-May-09	280	122	37.20	0.12	8.13	7.41	2.10	1.05	0.85	0.88
31-May-09	268	128	38.90	0.12	8.18	7.54	1.85	0.90	0.92	0.94
1-Jun-09	284	126	33.70	0.15	8.06	7.31	1.32	0.76	0.74	0.78
2-Jun-09	292	124	44.60	0.14	7.98	6.95	1.71	0.86	0.82	0.78
3-Jun-09	294	152	32.40	0.26	7.58	7.15	1.51	0.77	0.85	0.83
4-Jun-09	294	124	27.60	0.13	8.06	6.70	1.28	0.62	0.66	0.95
5-Jun-09	294	146	35.60	0.10	8.08	7.24	1.88	0.78	0.50	0.55
6-Jun-09	288	138	30.40	0.14	8.05	7.11	2.30	0.99	0.91	0.83
7-Jun-09	290	128	24.10	0.10	8.03	7.22	1.95	1.19	0.87	0.89
8-Jun-09	288	126	69.30	0.11	8.12	7.42	2.25	1.15	0.88	0.87
9-Jun-09	290	138	47.20	0.10	8.22	7.40	1.95	1.05	0.90	0.86
10-Jun-09	296	136	38.20	0.11	8.15	7.39	2.30	1.05	0.84	0.83
11-Jun-09	302	136	33.60	0.11	8.14	7.36	2.35	1.25	0.83	0.81
12-Jun-09	302	132	26.70	0.10	8.23	7.53	2.05	1.25	0.87	0.87
13-Jun-09	322	148	41.00	0.12	8.32	7.71	1.65	0.80	0.42	0.00
14-Jun-09	320	152	25.10	0.10	8.55	7.39	1.91	0.67	0.83	0.85
15-Jun-09	326	142	21.70	0.10	8.16	7.28	2.18	1.08	0.87	0.85
16-Jun-09	320	136	19.70	0.12	8.58	7.24	1.77	0.87	0.94	0.78
17-Jun-09	336	148	10.90	0.17	7.78	6.76	1.67	0.72	0.88	0.79
18-Jun-09	338	132	36.80	0.14	7.91	7.15	2.35	0.90	0.82	0.74
19-Jun-09	322	122	59.30	0.11	8.09	7.32	2.25	1.05	0.90	0.88
20-Jun-09	338	120	47.20	0.20	8.00	6.83	1.77	1.00	0.76	0.77
21-Jun-09	334	120	21.40	0.24	8.09	6.93	1.97	1.00	0.72	0.74
22-Jun-09	348	140	17.40	0.22	8.79	6.60	1.84	0.73	0.55	0.73
23-Jun-09	344	122	26.90	0.21	7.71	7.07	2.08	0.96	0.29	0.31
24-Jun-09	342	140	22.10	0.18	8.65	7.86	1.82	0.82	0.40	0.51
25-Jun-09	368	140	23.10	0.15	8.65	7.63	2.08	0.59	0.27	0.31
26-Jun-09	370	148	19.50	0.18	8.55	7.30	2.20	0.87	0.33	0.37
27-Jun-09	360	154	26.00	0.14	8.49	7.21	2.15	1.29	0.73	0.94
28-Jun-09	386	160	26.80	0.26	8.49	7.46	2.20	1.23	0.00	0.00

16510	415
17790	534
17890	515
18120	538
18820	543
16710	530
18540	565
17810	520
18320	535
19210	557
17580	547
19220	568
17790	548
16370	556
17660	567
14910	526
19100	541
17490	599
15220	537
21330	607
19010	562
15820	558
17720	559
21330	701
20750	705
18100	685
17930	676
18700	690
20160	701
20530	692
17900	693
22650	784
20210	691
21290	688
21940	715
19960	693
21110	712

29-Jun-09	340	140	25.90	0.18	8.61	7.38	2.20	1.39	1.10	1.00
30-Jun-09	340	150	28.20	0.37	8.47	7.29	2.14	1.50	1.00	0.80
1-Jul-09	344	144	27.90	0.17	8.58	7.42	2.70	1.55	1.00	1.00
2-Jul-09	358	150	20.90	0.14	8.54	7.60	2.20	1.48	1.10	1.10
3-Jul-09	354	160	20.50	0.18	8.48	7.44	1.49	1.06	0.80	0.50
4-Jul-09	350	134	30.90	0.12	8.44	7.38	2.10	0.90	0.90	0.80
5-Jul-09	348	138	44.20	0.09	8.44	7.42	2.20	1.05	0.80	0.90
6-Jul-09	360	144	36.60	0.08	8.45	7.46	2.01	0.91	0.90	1.00
7-Jul-09	360	148	33.50	0.18	8.52	7.43	2.15	0.93	1.00	0.90
8-Jul-09	362	150	37.50	0.12	8.50	7.51	2.06	0.88	0.70	0.90
9-Jul-09	368	160	58.60	0.12	8.56	7.46	2.04	1.09	0.90	1.20
10-Jul-09	370	266	47.70	0.20	8.54	7.49	1.01	1.14	0.50	0.70
11-Jul-09	364	190	53.50	0.11	8.56	7.79	1.74	0.70	1.00	0.80
12-Jul-09	380	152	61.90	0.17	8.61	7.40	1.91	0.87	0.70	0.80
13-Jul-09	350	150	37.40	0.12	8.60	8.08	2.12	1.16	1.40	1.00
14-Jul-09	366	160	37.50	0.12	8.61	7.35	2.20	1.05	1.10	1.40
15-Jul-09	340	146	42.70	0.13	8.59	7.41	1.65	1.11	0.80	0.90
16-Jul-09	360	172	47.20	0.17	8.58	7.53	2.04	1.36	0.40	0.50
17-Jul-09	374	170	39.80	0.16	8.71	7.48	2.14	1.39	0.70	0.90
18-Jul-09	368	162	38.10	0.19	8.71	7.61	2.45	1.40	0.90	0.70
19-Jul-09	366	156	43.20	0.13	8.72	7.56	2.55	1.50	0.70	0.80
20-Jul-09	366	164	97.80	0.08	8.64	7.46	2.18	1.27	0.80	0.70
21-Jul-09	362	162	40.00	0.09	8.59	7.71	1.89	1.33	0.90	0.90
22-Jul-09	372	170	37.00	0.08	8.63	7.48	2.02	1.21	1.00	0.80
23-Jul-09	362	156	43.70	0.08	8.58	7.47	1.90	0.90	0.80	0.90
24-Jul-09	374	150	41.80	0.20	8.54	7.43	1.57	0.80	0.70	0.70
25-Jul-09	358	146	34.90	0.11	8.62	7.50	2.45	1.00	0.80	0.80
26-Jul-09	358	158	34.90	0.11	8.66	7.57	1.95	1.15	0.90	0.80
27-Jul-09	382	160	43.50	0.17	8.49	7.47	1.75	0.95	0.80	0.80
28-Jul-09	368	162	46.50	0.09	8.58	7.43	1.86	0.91	0.80	0.80
29-Jul-09	370	154	40.80	0.11	8.55	7.66	1.95	1.01	0.70	0.70
30-Jul-09	370	156	31.60	0.13	8.56	7.47	2.20	1.22	0.70	0.80
31-Jul-09	364	158	27.30	0.21	8.55	7.59	1.40	1.07	0.80	0.90
1-Aug-09	348	152	44.20	0.14	8.64	7.56	1.65	1.00	0.70	0.80
2-Aug-09	344	152	23.90	0.10	8.59	7.55	1.55	0.90	0.80	0.80
3-Aug-09	338	140	26.70	0.08	8.62	7.46	1.75	1.00	0.70	0.70
4-Aug-09	366	144	34.00	0.11	8.82	7.37	0.97	0.60	1.10	1.00

22330	696
24790	720
21730	680
21670	669
21240	697
20560	661
20980	659
22630	707
21920	715
22020	894
20720	967
21730	909
22720	913
23350	955
23520	913
24040	942
21120	909
18860	871
20630	910
22360	932
23660	937
23850	898
24420	925
23080	929
19630	912
21140	932
24550	860
16370	825
21120	719
21170	710
22070	709
13400	709
11440	640
12450	613
13260	617
18530	673
18520	700

5-Aug-09	340	144	23.80	0.13	8.74	7.50	2.20	1.30	0.60	0.70
6-Aug-09	360	158	19.70	0.11	8.71	7.94	1.79	1.28	0.90	1.10
7-Aug-09	340	168	69.30	0.14	8.57	7.70	1.80	1.25	0.70	0.70
8-Aug-09	342	136	45.40	0.08	8.65	7.57	1.90	0.95	0.80	0.80
9-Aug-09	330	146	39.00	0.08	8.73	7.64	1.85	1.00	0.80	0.80
10-Aug-09	342	210	19.90	0.09	8.74	7.71	1.81	1.06	0.80	0.80
11-Aug-09	338	154	34.50	0.08	8.80	7.49	1.79	0.96	0.80	0.80
12-Aug-09	334	164	38.30	0.12	8.73	7.57	1.51	1.30	0.60	0.70
13-Aug-09	342	160	48.30	0.78	8.55	7.66	1.52	0.78	0.70	0.60
14-Aug-09	340	164	44.50	0.11	8.44	7.56	1.77	0.86	1.10	0.70
15-Aug-09	332	146	36.10	0.14	8.64	7.57	1.70	0.85	1.00	1.50
16-Aug-09	282	150	33.20	0.11	8.63	7.54	1.89	0.83	1.10	1.20
17-Aug-09	320	140	36.50	0.12	8.48	7.57	1.78	1.10	0.80	0.90
18-Aug-09	316	160	36.70	0.11	8.70	7.72	1.62	0.97	0.50	0.80
19-Aug-09	336	148	46.10	0.18	8.79	7.64	1.53	0.69	0.60	1.00
20-Aug-09	336	144	32.40	0.09	8.75	7.67	1.50	0.70	1.00	0.80
21-Aug-09	334	148	40.70	0.09	8.67	7.70	1.44	0.82	0.90	0.80
22-Aug-09	330	148	26.50	0.08	8.68	7.66	2.40	0.95	0.90	0.70
23-Aug-09	322	140	36.60	0.08	8.72	7.69	2.30	1.15	0.80	0.80
24-Aug-09	328	154	43.10	0.10	8.59	7.51	1.88	1.14	0.80	0.90
25-Aug-09	342	138	36.10	0.12	8.59	7.50	1.69	1.09	0.80	1.00
26-Aug-09	326	124	32.30	0.11	8.67	7.38	1.94	0.98	0.80	1.30
27-Aug-09	330	136	33.10	0.11	8.59	7.38	2.03	1.15	1.00	0.60
28-Aug-09	320	128	33.80	0.12	8.54	7.38	2.09	1.20	1.30	1.40
29-Aug-09	334	128	29.80	0.09	8.63	7.46	2.24	1.19	0.80	0.80
30-Aug-09	330	148	32.10	0.08	8.57	7.45	1.84	1.08	0.60	0.70
31-Aug-09	338	154	39.70	0.12	8.58	7.48	1.83	0.98	0.80	0.70
1-Sep-09	338	148	51.50	0.11	8.65	7.59	1.81	0.78	0.90	0.90
2-Sep-09	340	160	40.30	0.10	8.63	7.27	1.94	0.68	0.80	0.80
3-Sep-09	362	158	42.00	0.13	8.56	7.49	1.67	0.99	0.80	0.80
4-Sep-09	342	158	43.20	0.13	8.46	7.37	1.30	0.74	0.70	0.70
5-Sep-09	320	136	39.60	0.11	8.58	7.57	1.55	0.80	0.70	0.70
6-Sep-09	328	134	61.40	0.10	8.41	7.42	1.75	0.75	0.70	0.70
7-Sep-09	330	132	64.00	0.11	8.49	7.54	1.80	0.80	0.80	0.80
8-Sep-09	340	136	52.70	0.08	8.62	7.69	1.52	0.63	0.70	0.70
9-Sep-09	340	138	53.70	0.08	8.59	7.59	2.20	0.87	0.90	0.80
10-Sep-09	338	132	50.60	0.08	8.53	7.52	2.20	1.28	0.88	0.86

22050	709
21330	640
21870	717
17730	669
19640	685
20990	697
22360	711
22320	722
22810	725
21040	709
19000	869
21890	690
14830	711
9800	712
9620	667
12390	642
17570	669
21720	689
21030	685
15530	692
12620	671
19130	699
20720	704
22130	726
17750	701
20920	694
21850	704
19180	692
21040	674
16060	671
14360	683
13840	664
14750	653
14100	665
19400	702
20740	700
20000	690

11-Sep-09	346	134	50.20	0.09	8.47	7.54	2.16	1.11	0.70	0.80
12-Sep-09	352	156	46.20	0.10	8.47	7.38	2.50	1.30	0.70	0.60
13-Sep-09	352	146	46.50	0.10	8.54	7.42	2.50	1.20	0.80	0.70
14-Sep-09	334	132	52.20	0.12	8.58	7.89	2.25	1.35	0.09	0.09
15-Sep-09	332	128	46.30	0.08	8.59	7.52	2.40	1.15	0.80	0.80
16-Sep-09	330	126	39.40	0.08	8.59	7.64	2.00	1.25	0.90	0.80
17-Sep-09	326	128	39.70	0.07	8.56	7.58	2.45	1.05	0.90	0.80
18-Sep-09	338	128	68.30	0.07	8.49	7.57	2.30	1.10	0.70	0.70
19-Sep-09	360	126	47.20	0.08	8.57	7.52	2.14	0.94	1.10	1.00
20-Sep-09	324	126	48.80	0.09	8.54	7.55	2.08	0.87	0.80	0.70
21-Sep-09	350	142	143.00	0.10	8.49	7.39	2.17	1.02	0.80	0.70
22-Sep-09	352	144	61.20	0.09	8.53	7.50	2.11	1.39	0.90	0.90
23-Sep-09	350	146	69.50	0.10	8.52	7.39	2.30	1.43	0.70	0.90
24-Sep-09	362	156	144.00	0.10	8.45	7.36	1.83	1.38	0.90	1.00
25-Sep-09	354	144	102.00	0.09	8.45	7.30	2.16	1.15	0.80	0.80
26-Sep-09	340	136	221.00	0.10	8.51	7.37	2.20	1.40	0.60	0.70
27-Sep-09	346	136	176.00	0.08	8.55	7.62	1.96	1.36	0.70	0.70
28-Sep-09	362	158	148.00	0.08	8.61	7.52	2.20	1.55	0.90	1.00
29-Sep-09	368	162	169.00	0.09	8.69	7.97	2.06	1.27	0.80	0.70
30-Sep-09	384	148	473.00	0.08	8.65	7.92	2.04	1.12	0.70	0.80
1-Oct-09	378	176	304.00	0.07	8.60	7.79	2.20	1.43	0.00	0.00
2-Oct-09	366	154	441.00	0.12	8.61	7.59	2.16	1.54	0.80	0.70
3-Oct-09	372	164	157.00	0.09	8.51	7.77	2.20	1.24	0.70	1.00
4-Oct-09	340	140	178.00	0.08	8.65	7.89	1.94	1.29	0.80	1.00
5-Oct-09	364	156	106.00	0.07	8.54	7.62	2.20	1.49	0.50	0.70
6-Oct-09	328	144	129.00	0.06	8.51	7.81	2.20	1.56	0.70	0.60
7-Oct-09	360	156	132.00	0.06	8.62	7.73	2.20	1.37	0.80	0.80
8-Oct-09	360	132	80.20	0.06	8.57	7.79	2.20	1.32	0.60	0.80
9-Oct-09	360	182	81.00	0.06	8.62	7.76	1.85	1.39	0.60	0.80
10-Oct-09	366	172	108.00	0.08	8.59	7.51	1.71	1.20	0.70	0.70
11-Oct-09	358	176	104.00	0.10	8.50	7.61	1.92	1.10	0.80	0.70
12-Oct-09	364	178	94.90	0.08	8.59	7.57	1.87	1.20	0.80	0.80
13-Oct-09	364	180	46.00	0.12	8.65	7.45	1.85	1.30	0.60	0.60
14-Oct-09	360	208	61.70	0.13	8.64	7.28	1.82	1.29	1.40	1.00
15-Oct-09	350	180	47.00	0.09	8.74	7.97	1.30	0.84	1.20	1.30
16-Oct-09	346	180	63.10	0.08	8.80	7.86	2.10	0.95	0.90	1.00
17-Oct-09	348	156	82.10	0.07	8.72	7.72	1.90	1.30	1.00	1.00

19690	701
19920	705
20860	706
20990	698
21810	697
20950	696
21350	702
22150	700
21050	697
19070	679
19760	740
21430	724
20500	723
17900	695
21690	710
20610	714
18610	696
20300	708
19560	654
20860	646
19900	645
20700	664
19700	667
15980	629
21773	669
19070	671
21940	635
15030	637
12690	632
12980	632
18600	701
18210	665
21150	666
20060	590
19130	656
20610	659
20030	636

18-Oct-09	352	164	77.30	0.08	8.71	7.75	2.50	1.40	0.80	0.80
19-Oct-09	376	182	56.00	0.08	8.82	7.36	2.30	1.22	1.10	1.00
20-Oct-09	356	158	76.50	0.07	8.64	7.73	1.93	1.49	1.00	1.00
21-Oct-09	360	174	83.30	0.08	8.71	7.42	2.40	1.14	0.90	0.80
22-Oct-09	364	160	77.70	0.07	8.72	7.65	2.18	1.24	0.90	0.90
23-Oct-09	364	156	54.50	0.06	8.92	7.52	2.50	1.61	0.90	1.00
24-Oct-09	344	156	49.00	0.07	8.75	7.83	2.20	1.60	0.90	0.90
25-Oct-09	342	150	67.00	0.07	8.75	7.63	2.00	1.57	0.80	0.70
26-Oct-09	340	142	101.00	0.10	8.77	7.81	1.95	1.45	0.70	0.70
27-Oct-09	340	154	65.80	0.08	8.78	7.70	2.25	1.20	0.70	0.80
28-Oct-09	346	148	53.60	0.08	8.77	8.07	2.00	1.20	0.80	0.80
29-Oct-09	340	154	65.50	0.09	8.78	7.88	1.70	1.25	0.07	0.08
30-Oct-09	338	146	60.80	0.08	8.77	7.63	1.95	1.25	0.70	0.70
31-Oct-09	362	162	117.00	0.07	8.50	7.73	1.78	1.34	0.80	0.60
1-Nov-09	358	194	210.00	0.07	8.55	7.83	1.86	1.16	0.80	0.50
2-Nov-09	352	166	53.20	0.07	8.71	7.84	1.85	1.16	0.80	0.90
3-Nov-09	360	168	49.20	0.07	8.63	7.89	1.85	1.09	0.60	0.90
4-Nov-09	360	168	36.00	0.08	8.67	8.09	1.93	1.05	0.70	0.80
5-Nov-09	372	174	38.80	0.06	8.65	7.79	2.04	1.30	0.80	0.90
6-Nov-09	378	170	39.80	0.06	8.69	7.78	1.79	1.28	0.90	0.70
7-Nov-09	366	172	40.40	0.06	8.76	7.56	1.76	1.10	0.80	0.80
8-Nov-09	370	182	35.60	0.06	8.66	7.66	1.82	1.25	0.90	0.90
9-Nov-09	372	178	48.80	0.07	8.73	8.04	1.89	1.02	0.90	1.00
10-Nov-09	368	178	57.40	0.07	8.72	7.59	1.62	1.24	0.80	0.90
11-Nov-09	376	184	40.20	0.06	8.64	7.70	1.97	1.07	0.60	0.70
12-Nov-09	378	168	54.40	0.10	8.72	7.62	1.82	1.14	0.80	0.70
13-Nov-09	372	158	52.40	0.07	8.77	7.96	1.87	1.15	0.80	0.70
14-Nov-09	370	184	30.10	0.06	8.67	7.85	1.65	1.14	0.70	0.70
15-Nov-09	372	160	36.50	0.05	8.58	7.75	2.03	1.35	0.80	0.70
16-Nov-09	378	180	246.00	0.06	8.66	7.51	2.05	1.33	0.90	0.90
17-Nov-09	378	236	55.80	0.08	8.57	8.77	1.99	1.15	0.86	0.80
18-Nov-09	386	208	115.00	0.08	8.61	7.56	2.30	1.40	0.81	0.86
19-Nov-09	372	180	108.00	0.08	8.64	7.13	1.84	1.47	0.87	1.27
20-Nov-09	390	262	46.80	0.14	8.60	8.04	1.43	1.16	0.91	0.91
21-Nov-09	376	190	77.60	0.11	8.53	7.95	1.95	1.05	0.81	0.79
22-Nov-09	380	184	65.10	0.10	8.55	7.87	1.80	1.10	0.79	0.81
23-Nov-09	392	188	40.70	0.11	8.58	8.38	1.94	1.09	0.70	0.70

17690	639
21080	669
18900	664
21160	684
18730	652
22000	681
22190	699
19550	647
20560	668
20480	705
20320	689
14030	617
13070	640
14710	521
13400	547
19710	661
17460	667
22370	706
19690	691
13390	681
16810	630
16640	594
18720	626
11500	604
8790	619
18910	640
19510	599
18620	637
18620	595
20680	630
19840	697
20240	703
16080	703
16400	675
14950	632
17170	650
17470	685

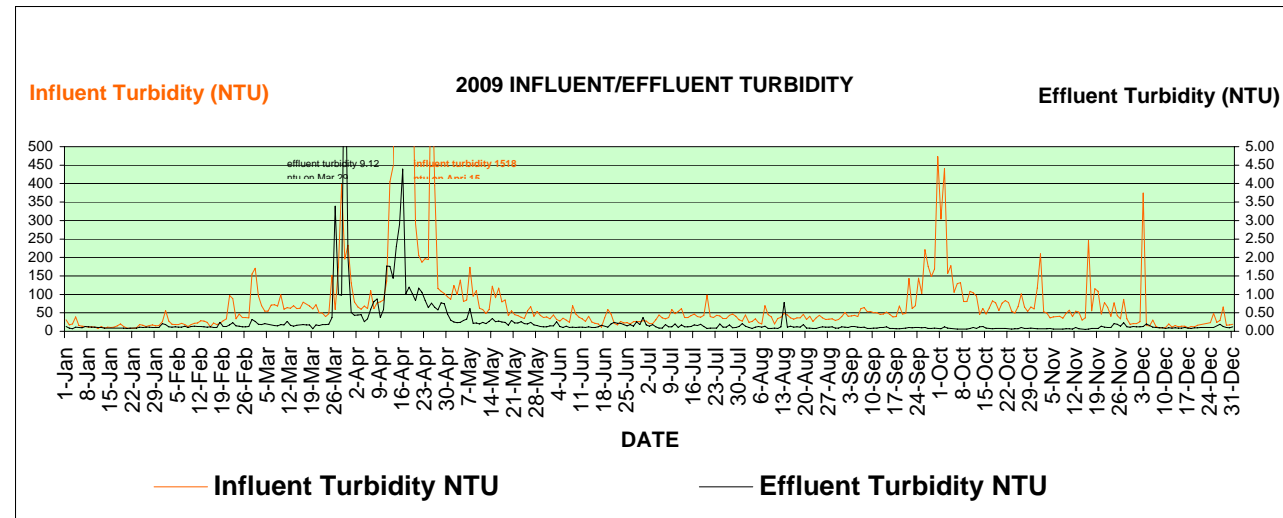
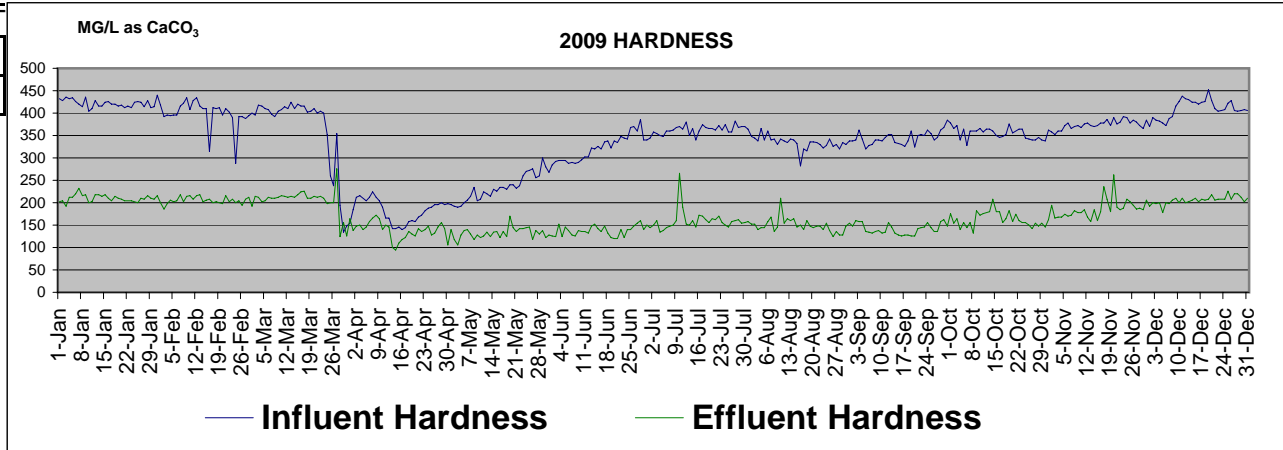
24-Nov-09	390	208	77.20	0.21	8.45	7.76	1.70	1.38	0.84	0.74
25-Nov-09	378	202	42.80	0.19	8.56	7.85	1.64	1.22	0.81	0.81
26-Nov-09	384	194	33.60	0.14	8.49	8.05	1.66	1.13	0.75	0.80
27-Nov-09	380	186	86.60	0.23	8.55	8.31	1.72	1.31	0.91	0.89
28-Nov-09	372	188	33.80	0.12	8.33	7.86	1.80	1.10	0.79	0.78
29-Nov-09	366	184	19.30	0.11	8.34	8.19	1.85	1.15	0.81	0.79
30-Nov-09	384	206	20.40	0.13	8.46	7.86	2.07	1.24	0.82	0.80
1-Dec-09	370	192	21.00	0.12	8.43	8.23	1.73	1.20	0.85	0.74
2-Dec-09	390	200	25.70	0.12	8.49	8.00	1.61	1.39	0.88	0.83
3-Dec-09	384	198	374.00	0.13	8.43	7.50	1.66	0.90	0.72	0.69
4-Dec-09	382	200	15.30	0.20	8.60	7.85	1.19	0.83	0.75	0.64
5-Dec-09	378	178	14.90	0.16	8.52	8.04	1.56	0.84	0.78	0.80
6-Dec-09	372	200	30.40	0.11	8.45	7.71	1.53	0.82	0.65	0.87
7-Dec-09	388	198	12.80	0.10	8.49	7.72	1.66	0.80	0.65	0.77
8-Dec-09	392	206	9.95	0.09	8.48	7.58	1.76	1.02	0.78	0.78
9-Dec-09	416	210	9.80	0.10	8.17	7.26	1.83	1.06	0.82	0.85
10-Dec-09	426	200	10.80	0.08	8.52	7.70	1.83	1.00	0.73	0.84
11-Dec-09	438	210	20.20	0.09	8.40	7.23	1.85	0.92	0.79	0.78
12-Dec-09	432	200	11.30	0.09	8.31	7.86	1.96	1.07	0.89	0.87
13-Dec-09	430	202	15.30	0.09	8.29	8.10	1.97	1.17	0.89	1.01
14-Dec-09	424	206	11.70	0.09	8.42	8.07	1.45	1.05	0.85	0.88
15-Dec-09	424	210	13.80	0.09	8.31	7.71	1.45	0.95	0.81	0.81
16-Dec-09	420	202	13.80	0.10	8.14	8.00	1.15	0.75	0.77	0.84
17-Dec-09	424	208	9.43	0.09	8.19	7.78	1.05	0.65	0.78	0.78
18-Dec-09	426	206	13.00	0.08	8.10	7.67	1.30	0.70	0.83	0.82
19-Dec-09	452	208	11.70	0.10	8.21	7.69	1.54	0.80	0.90	0.82
20-Dec-09	428	218	16.30	0.10	8.25	7.73	1.54	0.90	0.78	0.83
21-Dec-09	410	206	17.90	0.10	8.15	7.67	1.50	0.60	0.84	0.83
22-Dec-09	404	208	19.50	0.10	8.15	7.81	1.17	0.58	0.80	0.86
23-Dec-09	406	208	21.60	0.10	8.12	7.68	1.84	0.47	0.82	0.83
24-Dec-09	408	208	23.10	0.10	8.15	7.86	1.49	0.75	0.72	0.79
25-Dec-09	422	226	48.10	0.10	7.98	7.67	3.15	1.38	0.88	0.86
26-Dec-09	428	208	24.40	0.15	8.02	7.64	1.93	1.70	0.84	0.80
27-Dec-09	406	220	29.70	0.19	7.98	7.63	2.03	1.45	0.84	0.82
28-Dec-09	404	220	65.90	0.13	7.98	7.74	2.25	1.43	0.90	0.86
29-Dec-09	406	212	16.80	0.10	8.15	7.49	0.70	1.46	0.98	0.50
30-Dec-09	408	202	17.40	0.10	7.94	7.40	1.93	1.29	0.90	0.81

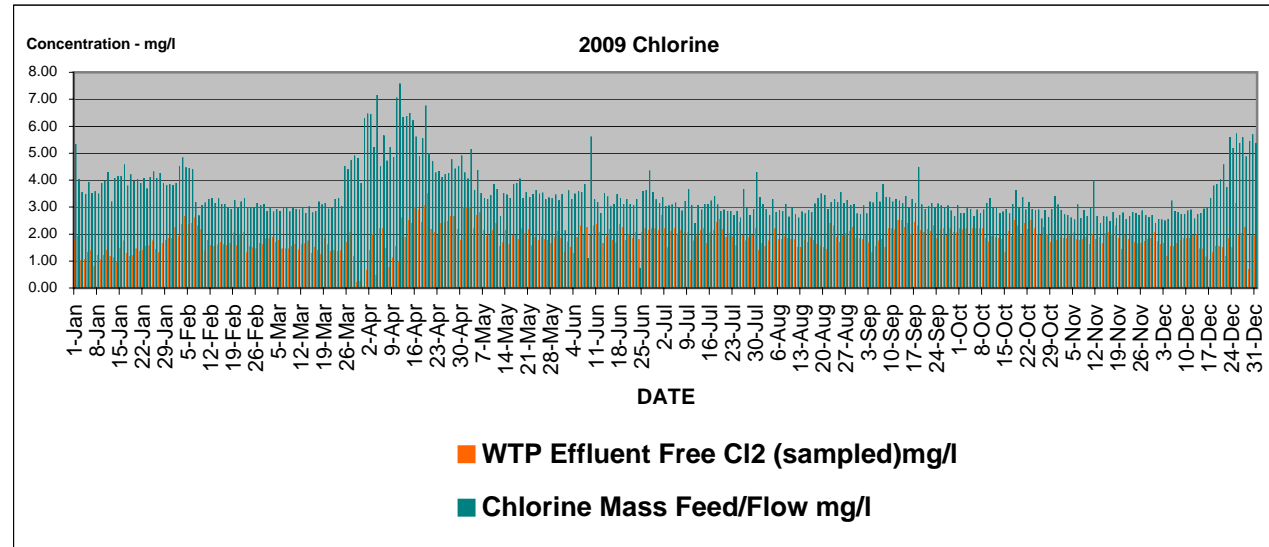
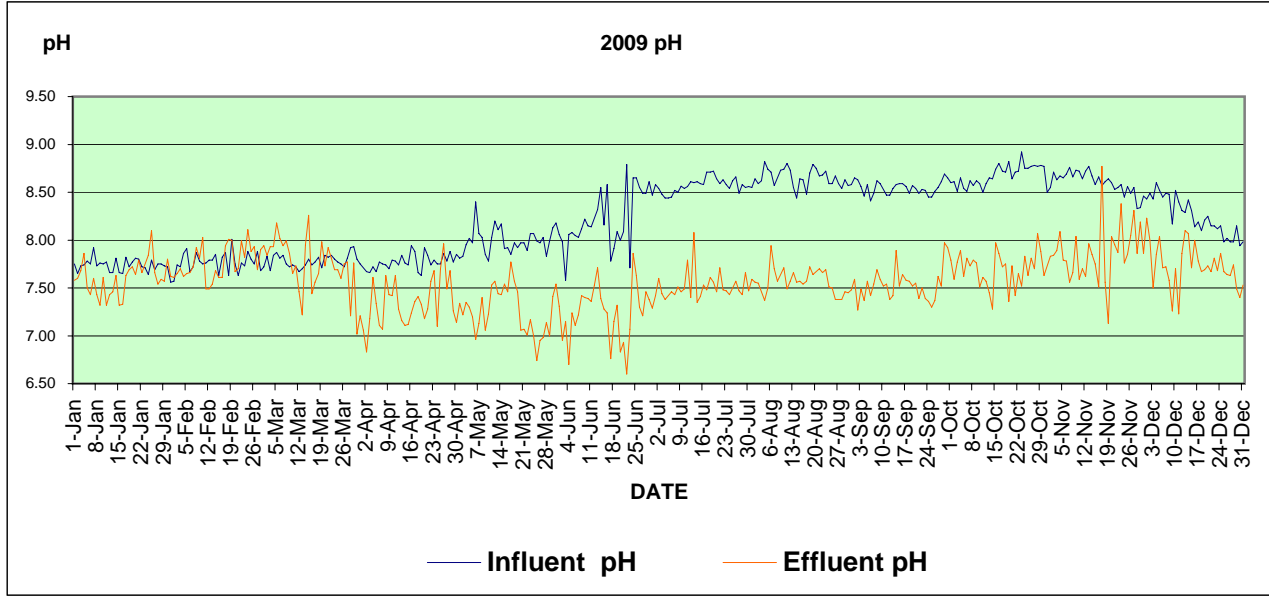
15850	695
16230	659
14880	678
17730	668
19630	663
19500	662
22180	699
20580	697
19890	684
20220	676
20220	766
13910	642
18690	604
18600	722
20980	606
20750	591
18550	583
19610	570
20150	569
20930	604
21040	585
20290	582
19830	592
18820	590
15560	548
15900	504
14410	502
16190	513
13810	512
12270	342
8160	287
8240	281
8180	267
8380	283
8490	282
8680	276
8450	285

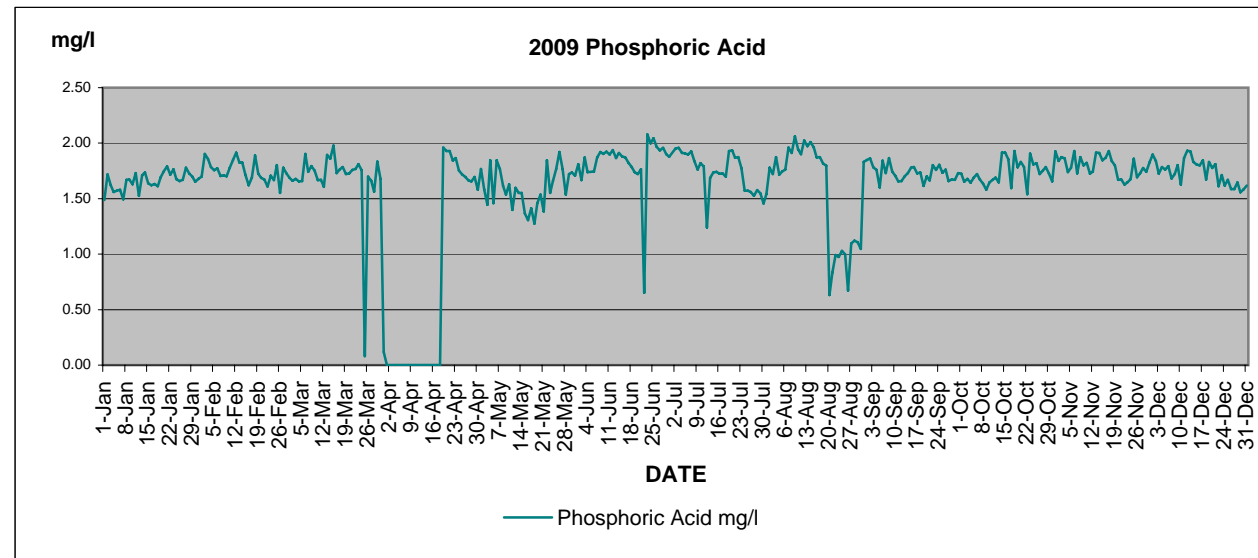
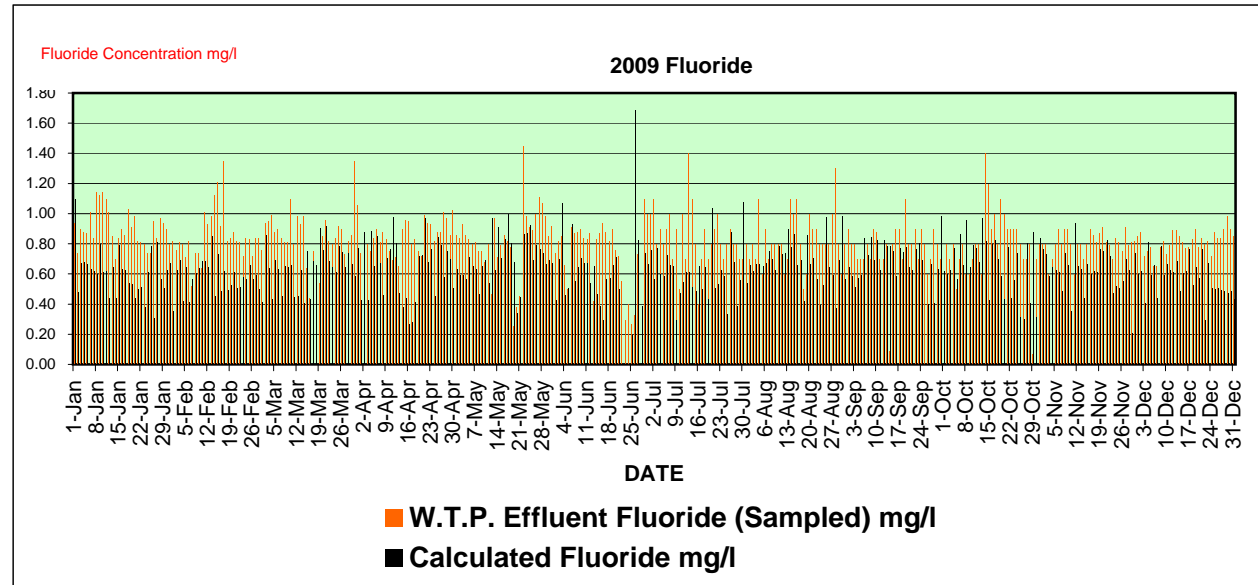
31-Dec-09	406	210	19.30	0.12	7.98	7.53	1.94	1.46	0.85	0.69
AVERAGE	342	169	78.35	0.25	8.22	7.57	1.85	1.08	0.82	0.82
PEAK DAY	452	276	1518.00	9.12	8.92	8.77	3.50	2.30	1.45	1.50
90th PERCENT	419	212	141.40	0.37	8.69	7.94	2.35	1.43	1.00	1.00
MEDIAN	360	160	43.50	0.12	8.21	7.57	1.85	1.09	0.82	0.82

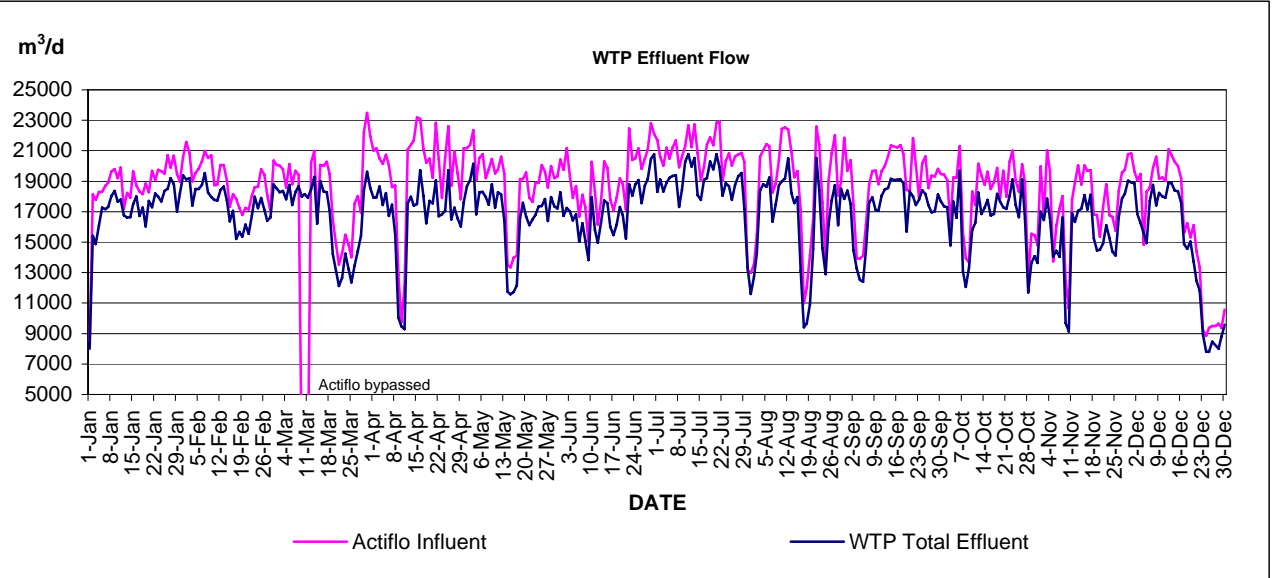
9460	289
18428	612
24790	967
6726401	223330
24790	

	INFLUENT	EFFLUENT
WINTER AVG	387	196
SUMMER AV	297	143









WTP Res Infl	Res Effl	Mass of	Chlorine Mass	Mass of	Calculated	Calculated
Flow less process	less process	Chlorine	Feed/Flow	Fluoride	HFS Acid	Fluoride
m ³	m ³	kg	mg/l	kg	mg/l	mg/l
7180	8009	39.92	5.336	27.40	3.663	1.1
16845	15428	69.40	4.033	27.40	1.592	0.5
17760	14884	64.86	3.548	41.10	2.248	0.7
17527	16097	63.05	3.483	41.10	2.271	0.7
17880	17275	72.58	3.934	41.10	2.228	0.7
18922	17166	68.49	3.514	41.10	2.109	0.6
19367	17314	71.22	3.573	41.10	2.062	0.6
19993	18032	71.67	3.484	41.10	1.998	0.6
20029	18352	80.29	3.896	54.80	2.659	0.8
19484	17651	79.38	3.965	41.10	2.053	0.6
19255	17789	84.82	4.280	41.10	2.074	0.6
18210	16764	59.88	3.192	27.40	1.461	0.4
18459	16611	77.57	4.074	41.10	2.159	0.6
18196	16641	77.57	4.135	27.40	1.461	0.4
20104	17490	85.73	4.144	54.80	2.649	0.8
18889	17994	88.91	4.566	41.10	2.111	0.6
19165	16729	74.84	3.790	41.10	2.081	0.6
18434	17261	79.83	4.202	34.25	1.803	0.5
18699	16022	76.20	3.955	34.25	1.777	0.5
18175	17714	75.75	4.040	27.40	1.461	0.4
20108	17293	80.29	3.879	34.25	1.655	0.5
19393	18194	81.19	4.062	34.25	1.713	0.5
21223	17977	80.29	3.681	27.40	1.256	0.4
19647	17669	83.01	4.103	41.10	2.032	0.6
17747	18360	78.93	4.304	47.95	2.615	0.8
19505	18518	81.65	4.062	20.55	1.022	0.3
19740	19208	86.64	4.259	54.80	2.694	0.8
21151	18827	83.92	3.865	41.10	1.893	0.6
19701	17005	77.11	3.808	34.25	1.691	0.5
19091	18188	75.30	3.834	41.10	2.093	0.6
20823	19373	81.19	3.796	47.95	2.242	0.7

Phosphoric Acid	Res Effluent	Phosphoric Acid
Daily Use		Daily Use
kg	m3/d	mg/l
10.20	6851	1.489
19.00	11055	1.719
17.40	10744	1.620
18.60	11924	1.560
20.40	12981	1.572
20.00	12666	1.579
19.20	12847	1.495
23.00	13767	1.671
23.20	13869	1.673
21.80	13389	1.628
23.60	13632	1.731
19.00	12464	1.524
21.00	12278	1.710
21.00	12101	1.735
21.00	12816	1.639
22.00	13577	1.620
20.00	12248	1.633
20.80	12895	1.613
19.60	11583	1.692
23.20	13281	1.747
23.80	13297	1.790
23.60	13753	1.716
22.80	12920	1.765
21.80	13018	1.675
22.40	13503	1.659
22.80	13665	1.668
26.20	14738	1.778
24.20	14018	1.726
21.00	12362	1.699
22.80	13809	1.651
25.00	14888	1.679

22514	19112	89.81	3.890	27.40	1.187	0.4
19118	19112	88.91	4.518	41.10	2.088	0.6
17207	19202	85.73	4.830	41.10	2.315	0.7
19156	17389	88.00	4.467	27.40	1.391	0.4
18599	18497	84.82	4.432	41.10	2.147	0.6
19250	18484	87.09	4.401	27.40	1.385	0.4
21090	18756	68.95	3.183	41.10	1.898	0.6
19893	19545	54.89	2.687	41.10	2.012	0.6
18787	18251	58.97	3.070	41.10	2.140	0.6
17412	17959	56.70	3.159	41.10	2.290	0.7
17449	17768	59.42	3.305	41.10	2.286	0.7
18664	17734	63.96	3.331	41.10	2.141	0.6
18806	18428	60.78	3.141	54.80	2.832	0.8
17532	18654	59.88	3.317	27.40	1.518	0.5
16312	17738	52.16	3.101	41.10	2.444	0.7
16311	16365	52.16	3.098	27.40	1.627	0.5
16064	17062	49.44	2.982	34.25	2.066	0.6
16137	15204	48.54	2.912	27.40	1.644	0.5
15115	15678	50.80	3.246	27.40	1.751	0.5
16159	15365	49.90	2.988	34.25	2.051	0.6
15693	16163	51.71	3.188	27.40	1.689	0.5
15537	15549	53.52	3.331	27.40	1.705	0.5
17223	16748	53.07	2.990	34.25	1.930	0.6
17655	17980	54.43	2.991	34.25	1.882	0.6
18236	17229	56.25	2.993	41.10	2.187	0.7
17599	17900	57.15	3.149	34.25	1.887	0.6
16834	17120	53.07	3.055	34.25	1.972	0.6
16067	16406	51.26	3.108	27.40	1.662	0.5
19335	18777	56.70	2.835	27.40	1.370	0.4
18601	18503	57.15	2.985	54.80	2.862	0.9
18735	18282	54.43	2.822	41.10	2.131	0.6
18496	18354	55.34	2.905	27.40	1.438	0.4
17331	17810	50.80	2.846	41.10	2.303	0.7
18870	18767	57.61	2.968	41.10	2.117	0.6
17561	17431	53.52	2.965	27.40	1.518	0.5
18412	18278	53.52	2.829	41.10	2.172	0.7
18579	18674	56.70	2.962	41.10	2.147	0.6

25.40	14960	1.698
28.00	14710	1.903
24.00	12934	1.856
25.00	14017	1.784
25.00	14239	1.756
25.00	14094	1.774
24.00	14083	1.704
22.60	13206	1.711
22.40	13160	1.702
24.80	13936	1.780
23.80	12873	1.849
26.00	13582	1.914
25.00	13686	1.827
24.00	13144	1.826
20.60	12017	1.714
17.80	10985	1.620
18.20	10776	1.689
21.20	11233	1.887
18.80	10894	1.726
19.00	11260	1.687
18.20	10880	1.673
18.60	11567	1.608
22.20	13001	1.708
20.80	12486	1.666
23.60	13086	1.803
18.40	11857	1.552
21.20	11918	1.779
20.00	11576	1.728
24.00	14216	1.688
23.00	13844	1.661
22.80	13585	1.678
23.20	14020	1.655
22.00	13279	1.657
26.00	13671	1.902
21.60	12394	1.743
24.20	13488	1.794
24.00	13697	1.752

18254	17978	54.89	2.921	41.10	2.187	0.7
17952	18156	53.52	2.896	27.40	1.483	0.4
17605	17918	53.52	2.954	27.40	1.512	0.5
19229	18463	54.89	2.775	41.10	2.078	0.6
19599	19281	60.78	3.015	27.40	1.359	0.4
15899	16218	45.81	2.790	41.10	2.503	0.8
18474	19006	53.98	2.839	27.40	1.441	0.4
17473	18324	57.61	3.197	41.10	2.281	0.7
18140	18281	57.61	3.084	41.10	2.200	0.7
17633	17055	57.15	3.145	54.80	3.016	0.9
15697	14210	47.63	2.936	41.10	2.534	0.8
12989	13119	40.37	2.993	41.10	3.047	0.9
11474	12132	39.46	3.302	27.40	2.293	0.7
12194	12678	42.18	3.324	27.40	2.159	0.6
12939	14236	40.82	3.031	27.40	2.034	0.6
12630	13253	58.97	4.519	34.25	2.625	0.8
13411	12343	60.78	4.395	34.25	2.477	0.7
15491	13476	75.30	4.727	34.25	2.150	0.6
16213	14408	81.65	4.904	41.10	2.468	0.7
14915	15414	74.39	4.818	34.25	2.218	0.7
20624	18380	82.10	3.882	41.10	1.943	0.6
20750	19630	134.27	6.307	54.80	2.574	0.8
18842	18553	125.19	6.460	27.40	1.414	0.4
18251	17910	121.11	6.439	54.80	2.913	0.9
18655	17950	100.25	5.216	27.40	1.426	0.4
17990	18654	132.45	7.140	54.80	2.954	0.9
18337	17429	84.82	4.498	41.10	2.179	0.7
18762	18206	109.32	5.655	54.80	2.835	0.9
17692	16717	86.18	4.715	41.10	2.248	0.7
17186	17452	92.53	5.213	27.40	1.544	0.5
16865	15453	84.37	4.843	41.10	2.359	0.7
10246	10040	76.20	7.056	27.40	2.537	0.8
7905	9476	63.96	7.578	27.40	3.246	1.0
9726	9284	64.86	6.334	27.40	2.676	0.8
16741	17549	110.22	6.375	27.40	1.585	0.5
21020	17975	140.16	6.486	27.40	1.268	0.4
18077	17389	115.67	6.209	27.40	1.471	0.4

22.00	13202	1.666
22.00	13186	1.668
21.00	13083	1.605
25.00	13198	1.894
26.00	13984	1.859
23.00	11625	1.978
25.00	14444	1.731
24.00	13605	1.764
23.80	13339	1.784
21.40	12430	1.722
22.80	13197	1.728
21.60	12282	1.759
20.00	11324	1.766
21.60	11932	1.810
23.80	13545	1.757
1.00	12417	0.081
18.80	11078	1.697
20.40	12291	1.660
21.40	13705	1.561
26.00	14185	1.833
24.40	13450	1.678
1.60	14538	0.119
0.00	13401	0.000
0.00	12937	0.000
0.00	13369	0.000
0.00	13752	0.000
0.00	12822	0.000
0.00	13678	0.000
0.00	12575	0.000
0.00	13096	0.000
0.00	11870	0.000
0.00	9392	0.000
0.00	8863	0.000
0.00	8420	0.000
0.00	13426	0.000
0.00	13175	0.000
0.00	12552	0.000

22298	17492	127.92	5.600	20.55	0.900	0.3
21665	19733	108.41	4.879	20.55	0.925	0.3
19204	18055	109.32	5.538	27.40	1.388	0.4
16656	16234	116.12	6.759	41.10	2.392	0.7
16441	17704	84.82	4.993	41.10	2.419	0.7
16468	17539	79.83	4.699	54.80	3.225	1.0
20567	19050	90.27	4.272	47.95	2.269	0.7
18360	16699	81.65	4.322	47.95	2.538	0.8
17644	16835	74.39	4.092	27.40	1.507	0.5
18872	17053	82.10	4.230	54.80	2.823	0.8
20203	19717	88.45	4.257	54.80	2.637	0.8
17131	16491	83.92	4.754	34.25	1.941	0.6
18594	17276	84.37	4.413	47.95	2.508	0.8
17133	16563	79.83	4.521	41.10	2.327	0.7
15566	16022	78.93	4.899	27.40	1.701	0.5
18879	17610	83.01	4.272	41.10	2.115	0.6
20229	18683	83.92	4.042	41.10	1.980	0.6
20365	19083	107.50	5.144	41.10	1.967	0.6
21230	20148	78.93	3.622	41.10	1.886	0.6
16804	16828	75.75	4.369	41.10	2.370	0.7
18394	18267	66.23	3.506	41.10	2.176	0.7
19027	18304	65.32	3.341	41.10	2.102	0.6
17025	17969	57.61	3.282	27.40	1.561	0.5
18449	17453	65.32	3.438	41.10	2.163	0.6
17290	18807	68.49	3.839	41.10	2.304	0.7
18475	17260	69.40	3.653	34.25	1.803	0.5
18544	18270	50.80	2.664	61.65	3.233	1.0
19085	18125	68.95	3.516	41.10	2.096	0.6
17484	16408	62.14	3.452	54.80	3.044	0.9
11241	11749	39.01	3.334	27.40	2.342	0.7
11938	11586	47.63	3.847	34.25	2.767	0.8
11939	11726	48.08	3.881	41.10	3.317	1.0
12333	12157	51.71	4.046	34.25	2.680	0.8
17671	16573	60.33	3.324	41.10	2.264	0.7
17804	17594	64.86	3.541	20.55	1.122	0.3
17855	16686	62.14	3.376	27.40	1.488	0.4
16137	16109	58.06	3.481	47.95	2.875	0.9

0.00	12790	0.000
0.00	14810	0.000
0.00	13433	0.000
22.00	11214	1.962
23.80	12335	1.929
24.40	12647	1.929
25.40	13783	1.843
22.50	12069	1.864
21.70	12379	1.753
21.60	12565	1.719
24.40	14400	1.694
19.80	11908	1.663
21.00	12688	1.655
21.00	12388	1.695
17.40	11016	1.580
21.40	12099	1.769
20.60	13010	1.583
18.80	13100	1.445
24.00	13636	1.845
19.00	11184	1.460
24.00	13205	1.845
23.00	13275	1.768
21.00	12728	1.614
20.00	12302	1.537
21.20	13061	1.630
18.20	11521	1.399
20.80	12850	1.599
20.20	12626	1.553
20.20	12268	1.553
17.80	11066	1.368
17.00	10864	1.307
18.40	11023	1.414
16.60	10804	1.276
19.00	12250	1.460
20.00	12722	1.537
18.00	11933	1.384
24.00	11602	1.845

16095	16502	59.88	3.627	47.95	2.904	0.9
17256	16793	62.14	3.493	54.80	3.080	0.9
17375	17334	63.05	3.524	41.10	2.297	0.7
17582	17364	59.42	3.279	47.95	2.646	0.8
18277	17840	63.05	3.350	47.95	2.548	0.8
16180	16389	55.34	3.312	41.10	2.460	0.7
17975	17965	63.96	3.450	41.10	2.217	0.7
17290	17362	57.61	3.235	41.10	2.308	0.7
17785	17205	63.50	3.466	41.10	2.243	0.7
18653	18285	40.82	2.125	27.40	1.426	0.4
17033	16718	63.50	3.612	41.10	2.338	0.7
18652	17254	63.50	3.304	68.50	3.564	1.1
17242	17022	62.14	3.493	27.40	1.540	0.5
15814	16428	58.97	3.602	27.40	1.674	0.5
17093	16830	62.60	3.545	54.80	3.103	0.9
14384	15026	57.15	3.833	27.40	1.838	0.6
18559	16244	20.87	1.092	41.10	2.152	0.6
16891	15102	97.98	5.602	41.10	2.350	0.7
14683	13820	49.90	3.278	34.25	2.250	0.7
20723	17934	67.59	3.169	47.95	2.248	0.7
18448	15791	52.62	2.768	34.25	1.802	0.5
15262	14967	55.34	3.498	34.25	2.165	0.6
17161	16285	59.88	3.379	27.40	1.546	0.5
20629	17739	64.41	3.020	27.40	1.285	0.4
20045	17570	64.41	3.104	20.55	0.990	0.3
17415	16010	63.05	3.483	34.25	1.892	0.6
17254	15458	59.88	3.339	34.25	1.910	0.6
18010	16161	58.06	3.105	41.10	2.198	0.7
19459	17320	66.23	3.285	47.95	2.378	0.7
19838	16791	63.96	3.115	34.25	1.668	0.5
17207	15230	54.89	3.066	0.00	0.000	0.0
21866	18810	74.84	3.304	0.00	0.000	0.0
19519	18053	14.52	0.718	0.00	0.000	0.0
20602	18789	76.66	3.601	13.70	0.643	0.2
21225	19081	79.38	3.618	123.30	5.620	1.7
19267	17555	86.64	4.341	54.80	2.745	0.8
20398	18708	74.84	3.545	27.40	1.298	0.4

20.20	11317	1.553
21.60	11421	1.660
23.00	12811	1.768
25.00	12676	1.922
23.00	13221	1.768
20.00	11569	1.537
22.40	13044	1.722
22.60	12328	1.737
22.20	11924	1.706
23.00	12694	1.812
19.00	11409	1.665
24.00	12820	1.872
21.00	12078	1.739
19.00	10912	1.741
20.00	11463	1.745
19.00	10146	1.873
21.20	11037	1.921
19.20	10083	1.904
16.80	8729	1.925
24.40	12865	1.897
21.20	10945	1.937
18.60	9971	1.865
21.60	11306	1.910
23.40	12456	1.879
23.60	12613	1.871
21.00	11525	1.822
20.00	11204	1.785
19.20	11047	1.738
21.40	12439	1.720
21.40	12133	1.764
6.40	9819	0.652
27.60	13282	2.078
25.00	12510	1.998
26.00	12713	2.045
26.00	13218	1.967
23.00	11882	1.936
25.40	12972	1.958

21634	19132	73.03	3.270	54.80	2.454	0.7
24070	20462	78.02	3.147	54.80	2.211	0.7
21050	20779	73.03	3.361	54.80	2.522	0.8
21001	18291	65.77	3.035	41.10	1.897	0.6
20543	19126	64.86	3.054	54.80	2.580	0.8
19899	18328	63.50	3.089	41.10	1.999	0.6
20321	18906	66.23	3.157	41.10	1.959	0.6
21923	19221	67.13	2.967	54.80	2.422	0.7
21205	19356	62.60	2.856	47.95	2.188	0.7
21126	19400	70.76	3.214	47.95	2.178	0.7
19753	17305	75.75	3.656	20.55	0.992	0.3
20821	18453	66.68	3.069	34.25	1.576	0.5
21807	20271	54.43	2.396	41.10	1.809	0.5
22395	20779	71.67	3.069	47.95	2.054	0.6
22607	19958	68.04	2.893	47.95	2.039	0.6
23098	20518	74.84	3.113	41.10	1.710	0.5
20211	18091	65.77	3.114	34.25	1.622	0.5
17989	17773	60.78	3.223	41.10	2.179	0.7
19720	19103	70.31	3.408	34.25	1.660	0.5
21428	19212	68.95	3.084	47.95	2.144	0.6
22723	20286	67.13	2.837	34.25	1.448	0.4
22952	19777	68.95	2.891	82.20	3.447	1.0
23495	20785	69.40	2.842	41.10	1.683	0.5
22151	19928	65.77	2.850	41.10	1.781	0.5
18718	18056	53.07	2.704	41.10	2.094	0.6
20208	18869	59.88	2.832	41.10	1.944	0.6
23690	18670	63.96	2.605	27.40	1.116	0.3
15545	17770	59.88	3.658	47.95	2.929	0.9
20401	18764	63.50	3.007	47.95	2.270	0.7
20460	19336	57.15	2.700	27.40	1.294	0.4
21361	19534	64.41	2.918	41.10	1.862	0.6
12691	17184	57.61	4.299	47.95	3.578	1.1
10800	13354	38.56	3.370	20.55	1.796	0.5
11837	11605	38.56	3.097	27.40	2.201	0.7
12643	12703	38.56	2.908	27.40	2.066	0.6
17857	14278	49.90	2.693	41.10	2.218	0.7
17820	18392	60.78	3.282	41.10	2.219	0.7

25.80	13578	1.900
27.40	14596	1.877
27.60	14417	1.914
28.60	14658	1.951
28.00	14309	1.957
26.00	13599	1.912
26.20	13725	1.909
26.60	14020	1.897
27.80	14443	1.925
27.00	14688	1.838
24.00	13626	1.761
27.00	14838	1.820
28.00	15640	1.790
19.60	15810	1.240
25.80	15307	1.686
27.80	16020	1.735
24.40	14014	1.741
23.80	13792	1.726
24.40	14133	1.726
24.60	14484	1.698
30.00	15555	1.929
29.00	14985	1.935
29.40	15746	1.867
28.60	15253	1.875
23.60	13306	1.774
21.80	13883	1.570
21.80	13870	1.572
21.00	13465	1.560
21.20	13903	1.525
22.40	14196	1.578
20.80	13435	1.548
18.00	12365	1.456
19.50	12630	1.544
19.40	10900	1.78
20.80	12076	1.72
24.20	12913	1.87
24.00	13998	1.71

21341	18800	62.14	2.818	47.95	2.175	0.7
20690	18641	61.24	2.871	47.95	2.248	0.7
21153	19238	62.14	2.841	54.80	2.506	0.8
17061	16343	54.89	3.096	41.10	2.318	0.7
18955	17484	51.71	2.633	41.10	2.093	0.6
20293	18729	62.60	2.982	54.80	2.611	0.8
21649	18998	60.78	2.718	54.80	2.451	0.7
21598	19180	58.06	2.601	54.80	2.455	0.7
22085	20511	64.41	2.824	68.50	3.003	0.9
20331	18209	58.06	2.760	54.80	2.605	0.8
18131	17572	54.89	2.889	54.80	2.884	0.9
21200	17967	61.24	2.797	47.95	2.190	0.7
14119	13125	46.27	3.120	34.25	2.310	0.7
9088	9402	32.66	3.333	13.70	1.398	0.4
8953	9666	33.57	3.489	27.40	2.848	0.9
11748	10930	42.64	3.441	27.40	2.211	0.7
16901	14556	51.26	2.917	41.10	2.339	0.7
21031	20517	68.95	3.174	41.10	1.892	0.6
20345	18404	68.95	3.279	27.40	1.303	0.4
14838	14601	49.44	3.184	27.40	1.764	0.5
11949	12905	44.91	3.558	41.10	3.257	1.0
18431	16148	59.88	3.130	41.10	2.148	0.6
20016	17754	67.59	3.262	41.10	1.984	0.6
21404	18740	68.04	3.075	27.40	1.238	0.4
17049	16116	54.89	3.092	41.10	2.315	0.7
20226	18502	57.61	2.754	68.50	3.274	1.0
21146	17829	59.88	2.740	41.10	1.881	0.6
18488	18376	58.51	3.051	41.10	2.143	0.6
20366	17515	58.06	2.760	41.10	1.953	0.6
15389	14446	51.26	3.192	27.40	1.706	0.5
13677	13267	45.36	3.159	27.40	1.908	0.6
13176	12516	48.99	3.540	27.40	1.980	0.6
14097	12395	47.17	3.198	41.10	2.786	0.8
13435	14486	54.43	3.860	34.25	2.429	0.7
18698	17603	65.32	3.367	54.80	2.825	0.8
20040	17940	69.40	3.346	47.95	2.312	0.7
19310	17119	63.96	3.198	54.80	2.740	0.8

23.00	13181	1.74
23.00	13057	1.76
26.80	13661	1.96
21.60	11306	1.91
25.40	12325	2.06
26.00	13374	1.94
27.00	14219	1.90
30.00	14824	2.02
30.00	15214	1.97
27.00	13434	2.01
24.00	12235	1.96
24.00	12821	1.87
17.00	9072	1.87
16.00	8806	1.82
16.00	8909	1.80
6.00	9512	0.63
7.60	9107	0.83
13.80	13904	0.99
13.20	13555	0.97
11.00	10689	1.03
9.00	9032	1.00
8.00	11891	0.67
15.00	13688	1.10
16.00	14262	1.12
13.00	11733	1.11
14.60	13934	1.05
24.00	13107	1.83
24.40	13204	1.85
24.00	12889	1.86
22.40	12569	1.78
22.00	12498	1.76
18.80	11756	1.60
21.60	11724	1.84
22.80	13181	1.73
25.40	13613	1.87
23.20	13306	1.74
20.80	12209	1.70

18989	17064	64.86	3.294	41.10	2.087	0.6
19215	18042	64.41	3.233	54.80	2.751	0.8
20154	18467	65.32	3.131	54.80	2.627	0.8
20292	18555	71.22	3.393	54.80	2.611	0.8
21113	19158	64.86	2.974	54.80	2.513	0.8
20254	19072	68.95	3.291	41.10	1.962	0.6
20648	19100	67.13	3.144	54.80	2.567	0.8
21450	19108	99.34	4.485	54.80	2.474	0.7
20353	18875	64.86	3.081	54.80	2.603	0.8
18391	15697	55.79	2.926	41.10	2.155	0.6
19020	18311	59.88	3.030	41.10	2.080	0.6
20706	18014	67.13	3.133	54.80	2.557	0.8
19777	17436	60.33	2.943	54.80	2.673	0.8
17205	17793	55.79	3.117	41.10	2.296	0.7
20980	18400	66.23	3.053	0.00	0.000	0.0
19896	18158	61.69	2.993	27.40	1.329	0.4
17914	17439	56.70	3.047	41.10	2.208	0.7
19592	16963	58.06	2.860	27.40	1.350	0.4
18906	17010	51.71	2.644	41.10	2.101	0.6
20214	18137	63.96	3.066	68.50	3.284	1.0
19255	17697	55.34	2.781	41.10	2.065	0.6
20036	17349	57.15	2.761	41.10	1.986	0.6
19033	17285	58.06	2.947	41.10	2.086	0.6
15351	14793	46.72	2.924	41.10	2.572	0.8
21104	17660	57.61	2.646	41.10	1.888	0.6
18399	16595	55.34	2.902	54.80	2.874	0.9
21305	19684	60.78	2.770	47.95	2.186	0.7
14393	13095	43.55	2.897	47.95	3.190	1.0
12058	12051	39.92	3.146	27.40	2.159	0.6
12348	13322	43.09	3.320	34.25	2.639	0.8
17899	15807	55.79	3.000	47.95	2.578	0.8
17545	16277	53.52	2.939	41.10	2.257	0.7
20484	18258	58.51	2.767	68.50	3.239	1.0
19470	16840	56.70	2.827	54.80	2.732	0.8
18474	17276	55.79	2.917	27.40	1.432	0.4
19951	17771	56.70	2.751	54.80	2.659	0.8
19394	16735	62.14	3.103	54.80	2.736	0.8

20.40	12335	1.65
22.40	13507	1.66
23.20	13643	1.70
23.40	13517	1.73
25.00	14043	1.78
25.00	13998	1.79
24.40	14126	1.73
24.20	13940	1.74
22.40	13880	1.61
19.00	11160	1.70
23.00	13813	1.67
25.00	13872	1.80
24.00	13639	1.76
24.00	13304	1.80
24.00	13850	1.73
24.00	13628	1.76
21.60	13031	1.66
20.60	12317	1.67
20.80	12468	1.67
23.00	13303	1.73
22.40	13000	1.72
21.40	12959	1.65
22.20	13222	1.68
17.20	10462	1.64
21.20	12543	1.69
22.00	12774	1.72
24.00	14339	1.67
18.80	11506	1.63
17.40	11003	1.58
20.60	12510	1.65
25.00	14974	1.67
24.80	14686	1.69
23.00	13972	1.65
24.00	12540	1.91
24.60	12856	1.91
24.00	12940	1.85
19.40	12175	1.59

17051	16854	63.96	3.615	41.10	2.323	0.7
20411	18178	62.14	2.948	41.10	1.950	0.6
18236	17668	63.50	3.360	27.40	1.450	0.4
20476	17289	61.24	2.894	54.80	2.590	0.8
18078	17195	59.42	3.173	27.40	1.463	0.4
21319	18053	63.96	2.907	41.10	1.868	0.6
21491	19111	63.96	2.882	54.80	2.470	0.7
18903	17427	56.70	2.900	20.55	1.051	0.3
19892	16637	52.62	2.559	20.55	1.000	0.3
19775	19138	58.97	2.879	54.80	2.676	0.8
19631	16504	53.07	2.612	27.40	1.348	0.4
13413	11702	40.82	2.910	41.10	2.929	0.9
12430	13664	44.45	3.401	13.70	1.048	0.3
14189	14067	45.36	3.084	41.10	2.794	0.8
12853	13641	38.56	2.877	34.25	2.556	0.8
19049	17002	53.52	2.716	47.95	2.433	0.7
16793	16443	47.17	2.702	34.25	1.962	0.6
21664	17862	58.06	2.595	47.95	2.143	0.6
18999	16579	49.90	2.534	41.10	2.087	0.6
12709	14047	41.28	3.083	27.40	2.046	0.6
16180	14429	43.55	2.590	27.40	1.630	0.5
16046	14044	48.08	2.890	41.10	2.470	0.7
18094	16627	49.44	2.641	41.10	2.196	0.7
10896	9689	34.47	2.998	13.70	1.191	0.4
8171	9146	34.93	3.974	27.40	3.117	0.9
18270	16889	50.35	2.663	41.10	2.173	0.7
18911	16332	46.72	2.395	41.10	2.107	0.6
17983	17050	49.44	2.655	27.40	1.472	0.4
18025	17189	48.99	2.631	41.10	2.207	0.7
20050	18078	51.26	2.479	41.10	1.987	0.6
19143	17140	55.79	2.812	41.10	2.072	0.6
19537	18099	52.16	2.577	41.10	2.031	0.6
15377	15260	43.55	2.708	41.10	2.556	0.8
15725	14457	45.81	2.794	41.10	2.506	0.8
14318	14506	38.10	2.549	41.10	2.749	0.8
16520	14919	45.81	2.668	41.10	2.394	0.7
16785	16112	48.99	2.804	27.40	1.568	0.5

23.80	12343	1.93
25.00	14031	1.78
24.00	13114	1.83
23.00	12893	1.78
18.00	11679	1.54
25.00	13112	1.91
26.00	14388	1.81
22.80	12538	1.82
19.20	11159	1.72
24.40	13921	1.75
22.60	12665	1.78
18.00	10433	1.73
21.00	12698	1.65
25.00	12982	1.93
22.80	12390	1.84
24.00	12814	1.87
21.60	11603	1.86
23.20	13344	1.74
21.20	11907	1.78
17.40	9015	1.93
16.20	9377	1.73
17.00	9068	1.87
21.00	11675	1.80
15.00	8233	1.82
14.00	8121	1.72
21.00	12036	1.74
22.00	11492	1.91
23.00	12028	1.91
22.20	12035	1.84
24.00	12842	1.87
24.00	12449	1.93
24.00	13043	1.84
18.20	10123	1.80
16.00	9584	1.67
16.40	9807	1.67
16.60	10205	1.63
19.20	11655	1.65

15155	15265	44.00	2.776	27.40	1.729	0.5
15571	14383	44.00	2.711	27.40	1.688	0.5
14202	14127	42.64	2.865	27.40	1.841	0.6
17062	16635	48.08	2.712	41.10	2.318	0.7
18967	17854	51.26	2.611	41.10	2.094	0.6
18838	18167	52.62	2.698	13.70	0.703	0.2
21481	19036	53.07	2.393	54.80	2.471	0.7
19883	18929	52.62	2.557	41.10	1.997	0.6
19206	18860	50.35	2.531	41.10	2.066	0.6
19544	16850	50.35	2.490	27.40	1.355	0.4
19454	16269	51.26	2.535	54.80	2.710	0.8
13268	15584	44.91	3.228	27.40	1.970	0.6
18086	14931	53.07	2.840	41.10	2.199	0.7
17878	17705	52.16	2.805	27.40	1.473	0.4
20374	18762	57.15	2.724	54.80	2.612	0.8
20159	17407	56.70	2.733	41.10	1.981	0.6
17967	18239	53.07	2.861	41.10	2.216	0.7
19040	18010	56.70	2.891	41.10	2.096	0.6
19581	17924	51.71	2.566	41.10	2.040	0.6
20326	18915	57.15	2.731	47.95	2.291	0.7
20455	18868	58.51	2.781	34.25	1.628	0.5
19708	18377	59.42	2.929	41.10	2.026	0.6
19238	18341	59.42	2.997	41.10	2.073	0.6
18230	17590	62.60	3.326	47.95	2.548	0.8
15012	14869	58.97	3.790	27.40	1.761	0.5
15396	14559	61.24	3.851	34.25	2.154	0.6
13908	15041	58.06	4.029	27.40	1.901	0.6
15677	13709	73.94	4.567	41.10	2.539	0.8
13298	12457	51.71	3.744	13.70	0.992	0.3
11928	11811	68.49	5.582	27.40	2.233	0.7
7873	8944	42.18	5.170	13.70	1.679	0.5
7959	7819	47.17	5.725	13.70	1.663	0.5
7913	7791	44.00	5.379	13.70	1.675	0.5
8097	8471	46.72	5.575	13.70	1.635	0.5
8208	8238	41.28	4.862	13.70	1.614	0.5
8404	8011	47.17	5.435	13.70	1.578	0.5
8165	8810	48.08	5.690	13.70	1.621	0.5

18.00	10747	1.67
18.80	10103	1.86
17.40	10278	1.69
20.40	11789	1.73
22.60	12724	1.78
23.00	13207	1.74
25.00	13689	1.83
26.20	13801	1.90
25.00	13584	1.84
20.00	11599	1.72
21.00	11768	1.78
18.00	10213	1.76
18.00	10034	1.79
21.00	12488	1.68
23.00	13351	1.72
24.00	13326	1.80
22.00	13523	1.63
24.00	12871	1.86
24.00	12414	1.93
26.60	13802	1.93
24.80	13538	1.83
24.00	13273	1.81
23.40	13010	1.80
23.00	12462	1.85
17.20	10283	1.67
18.00	9823	1.83
17.40	9791	1.78
15.00	8280	1.81
12.00	7450	1.61
13.00	7591	1.71
12.80	7918	1.62
11.80	7070	1.67
11.00	6939	1.59
11.80	7435	1.59
12.00	7288	1.65
11.20	7192	1.56
12.60	7966	1.58

9171	9589	50.80	5.370	13.70	1.448	0.4
	16777	62.97	3.474	38.55	2.104	0.6
	20785	140.16	7.578	123.30	5.620	1.7

6123451
21752

14.00	8651	1.62
20.38		
30.00		

